

MADE4NET | New Release of SCExpert 26.1

[Contact us](#)

MADE4NET announces the release of SCExpert 26.1, the latest update to our supply chain management solution. This version introduces new features and improvements designed to enhance operational flexibility and support enterprise growth.

SAP Business One integration

Our new SAP integration layer delivers a streamlined, modern approach to connectivity and configuration, enabling businesses to achieve faster, more reliable integration with SAP system. This solution simplifies data exchange processes, reduces setup complexity, and ensures secure, real-time communication for importing and exporting critical business data.

- **Web Services layer Integration** – Establishes a direct connection with the SAP Web Services layer, eliminating dependency on DI API or local installations. This reduces infrastructure overhead and accelerates deployment while ensuring compatibility with SAP's latest standards.
- **Effortless Installation** – Delivered as an integral part of the SCExpert setup, ensuring quick and hassle-free deployment. Administrators can configure connectivity in minutes without complex manual steps, reducing implementation time and cost.

Microsoft Dynamics 365 integration

Integrating with Microsoft Dynamics 365 Business Central provides businesses with a unified, flexible, and intelligent ERP foundation. By connecting SCExpert to Business Central, we enable customers to streamline supply-chain integration out of the box using a modern cloud platform that is part of the Microsoft ecosystem.

Our integration enhances operational efficiency through secure, real-time data synchronization using webhooks. This delivers a future-ready solution that accelerates system setup, improves connectivity, and supports scalable growth.



Microsoft Dynamics 365
Business Central

Introducing the SCEXpert AI Assistant

We are excited to announce the Made4net SCEXpert AI Assistant, now integrated directly into the SCEXpert application. This powerful capability transforms how users interact with the system by enabling natural, conversational access to documentation, operational knowledge, and technical guidance. Instead of searching through manuals or navigating complex menus, users can simply ask questions in plain language and receive accurate, contextual, and actionable answers instantly.

Key Components of the Made4net AI Engine

- **Multi-Document & Video Knowledge Sources** - Load and unify multiple documents, training materials, and videos to enrich the AI's knowledge base—ensuring answers are complete, consistent, and up to date.
- **Modern RAG Architecture** - Built using a state-of-the-art Retrieval-Augmented Generation (RAG) approach, combining: Advanced indexing, Vector search technology, Top-tier AI models
- **Embedded AI Assistant UI** - A seamless, AI-powered interface is now integrated directly inside the SCEXpert platform. Users can: Ask natural-language questions, receive real-time operational guidance, Follow streamlined workflows without ever leaving SCEXpert.
- **Enterprise-Grade Secure Authentication** - The SCEXpert AI Assistant and services are protected through our Identity and Access Management (IAM) platform, ensuring Compliance with enterprise security standards, this guarantees that AI-powered assistance remains secure, governed, and aligned with organizational policies.

The screenshot displays the SCEXpert application interface. On the left, a table titled "Picking Policies" lists various strategies with columns for Strategy ID, Description, Pick Method, Picks For Full Allocation, Pick Partial UOM, Picklist Base Cube, and Picklist Base Weight. On the right, an AI chat window titled "Made4net.AI" is open, showing a user query: "What are the different types of Picking Policies types exists and what each mean". The AI response lists five picking methods: Pick by Customer, Pick by Item, Pick by Order, Pick by Route, and Pick by Ship To, each with a brief description. The chat interface includes a "Send a message..." input field and a "MADE4NET" logo.

| Strategy ID | Description | Pick Method | Picks For Full Allocation | Pick Partial UOM | Picklist Base Cube | Picklist Base Weight |
|----------------|----------------|------------------|---------------------------|------------------|--------------------|----------------------|
| DRINKIT_CASES | Cases Picking | Pick By Order | No | No | | |
| DRINKIT_EACHES | Eaches Picking | Pick By Order | No | No | | |
| EASYFIX_STOR | EASYFIX_STOR | Pick By Route | No | No | | |
| EASYFIX_ZONE | EASYFIX_ZONE | Pick By Route | No | No | | |
| ETRONIX | Etronix | Single Pick | No | No | | |
| FishPic | FishPicking | Pick By Order | No | No | | |
| I-FOODCO | I-Food Cold | Pick By Order | No | No | | |
| I-FOODFZ | I-Food Frozen | Pick By Order | No | No | | |
| I-FOODR | I-Food Regular | Pick By Order | No | No | | |
| MEDICCO | Medic Cold | Pick By Customer | No | No | | |

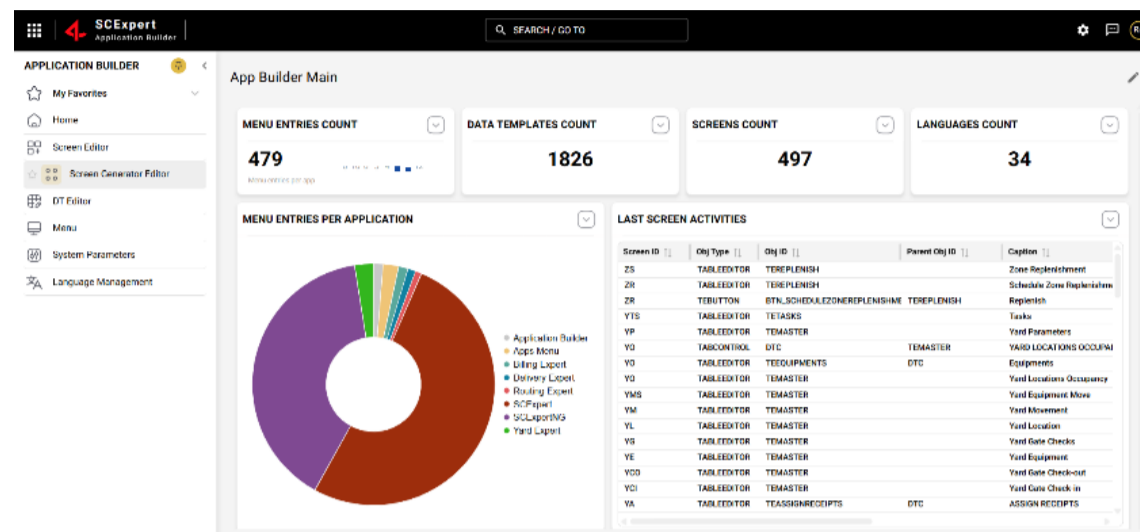
*To run the AI Engine, additional server & GPU hardware specifications are required, which extend the SCEXpert base prerequisites.

SCEXpert Next Generation Application Builder

Our new SCEXpert Application Builder is built on modern React technology, empowering administrators to effortlessly create and configure both new and existing screens through a streamlined, contemporary interface. All operations are powered by a robust RESTful API within our new services layer

- **Screen Editor service** - Empowers rapid customization of existing screens, creation of new screens from scratch, and intuitive component placement for a streamlined design experience.
- **Data Templates (DTs) service** - Delivers a modern interface for managing DT templates, featuring quick search, easy updates with seamless export/import capabilities, in addition a New DT Importer utility which improves import & export performance and stability for system setup.
- **Menu service** - Manage multiple menu configurations, including new level of application IDs, offering a modern approach to updating and creating menus for new and existing applications.
- **Vocabulary service** - Simplifies multilingual support by enabling easy setup of new languages and efficient updates of terms and values.

- **System Parameters service** - Provides a straightforward way to configure global system parameters for consistent application behavior.
- **React-Based Responsive Design** – Guarantees a consistent user experience and smooth interaction across all screen sizes and devices, Cross-Platform Support – Strategically aligned with our long-term product vision to deliver a modern, intuitive workflow.



Identity Access Management (IAM)

The latest version of our Identity and Access Management (IAM) platform introduces several enhancements designed to improve security, flexibility, and administrative efficiency:

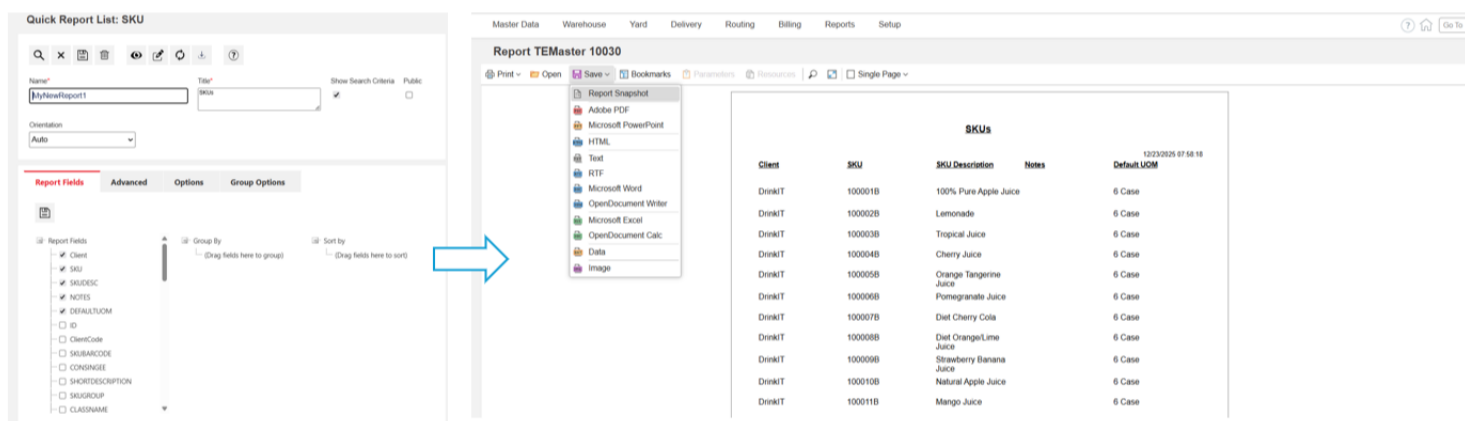
- **Access Policies Support**
Administrators can define both global and tenant-level access policies to allow or restrict access during login. Policies can include MFA conditions, IP allowlists and blocklists, network constraints, password requirements, session behavior, and more.
- **Tenant Level MFA and Password Configuration**
Administrators can now define and manage Multi-Factor Authentication (MFA) behavior globally at the tenant level. MFA can be enabled through SMS in addition to email and authenticator. Password rules can now be configured and enforced at the tenant level, enabling each organization to apply security standards that align with its compliance requirements and internal policies.
- **Webhooks support** – clients can securely subscribe to events from our identity platform, enabling them to easily integrate and extend functionality with other solutions.
- **User Onboarding Enhancements**
When creating a new user, administrators can choose to send an invitation email that guides the user through a self-service onboarding process, including self-managed password setup.
- **Vocabulary Service Integration**
The platform now supports multilingual deployments through integration with our Vocabulary service, allowing organizations to configure and manage language-specific terminology.
- **Group Claims Support**
Group-based claims simplify user management by enabling permissions to be assigned at the group level. This reduces administrative complexity, accelerates user onboarding, and streamlines role-based access control.



Quick reports enhancements

We Extended the quick reports implementation to support our new report designer framework while keeping the simplified operation for generating quick reports

- Keeping quick wizard setup generating report in few clicks
- Additional flexible export options to PDF, Excel, Word, HTML, and more
- Visual report design with drag-and-drop interface and real-time preview



To download the full release, please visit: <https://partners-portal.made4net.com>

To ensure you continue to properly receive software release information, please add release@made4net.com to your safe senders list.

© 2026 MADE4NET. All Rights Reserved.